

Addition

Exemplar

Expanded Form

Show Me

Tell me

①  $126 + 176$

① I'm finding the sum of 126 and 176.

②  $100 + 20 + 6$   
 $100 + 70 + 6$

② I expanded each number into 100's, 10's and 1's.

③  $6 + 6$

③ I added the digits in the ones place  $6 + 6$  and got 12.

④  $20 + 70$

④ I added the digits in the tens place  $20 + 70$  and got 90.

⑤  $100 + 100$

⑤ I added the digits in the hundreds place  $100 + 100$  and got 200.

⑥  $200 + 90 + 12$

⑥ I gather all the sums—

⑦  $200 + 90 + 12$

$200 + 90 + 12$   
 $200 + 100 + 2$   
 $300 + 0 + 2$

⑦ I carried over the ones and tens digits and then write the sum in expanded form.

⑧  $300 + 0 + 2$

~~$302$~~

⑧ The sum of the numbers 126 and 176 is 302.

## Addition

Exemplar

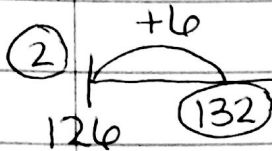
## Number line

Show Me

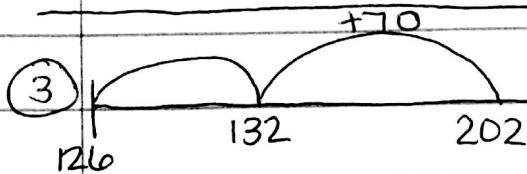
Tell Me

①  $126 + 176$

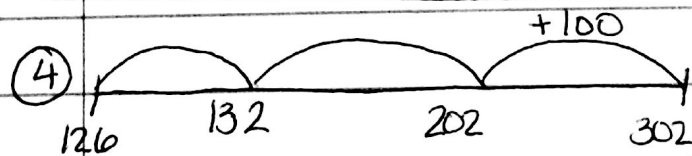
I'm finding the sum of 126 and 176



I drew a number line and put 126 on the left end. Then I took the digit in the ones place and added it to 126 and got 132.



I then took the digits in the tens place and added it to 132 and got 202.



Next, I took the digits in the hundreds place and added it to 202 and got 302.

⑤ 302

The sum of 126 and 176 is 302.

Subtraction

Exemplar

Expanded Form

Show me

tell me

1.  $435 - 217$

1. I'm finding the difference between 435 and 217.

2.  $400 + 30 + 5$   
 $200 + 10 + 7$   
—

2. I expand each number into 100's, 10's and 1's

3.  $15 - 7 = 8$

3. I cannot take 7 away from 5 so I am going to bring a ten over and add to 5, Now I can subtract 7 from 15 to get 8 ones.

4.  $20 - 10 = 10$

4. I am able to take 10 away from 20, so the difference is 10.

5.  $400 - 200 = 200$

5. I can subtract the 100s because 400 is larger than 200. The difference is 200.

6.  $200 + 10 + 8$

6. I write the differences of 100s, 10s, and 1s in expanded form

7.  $218$

7. The difference is 218.

# Subtraction

## Exemplar

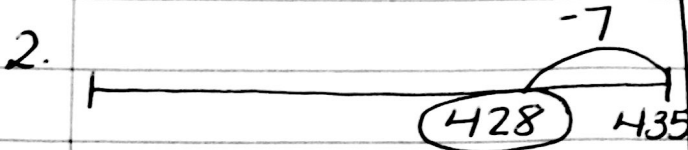
### Number Line

Show me

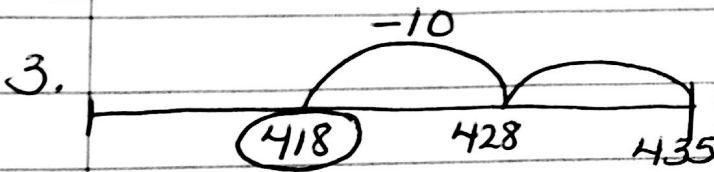
Tell me

1.  $435 - 217$

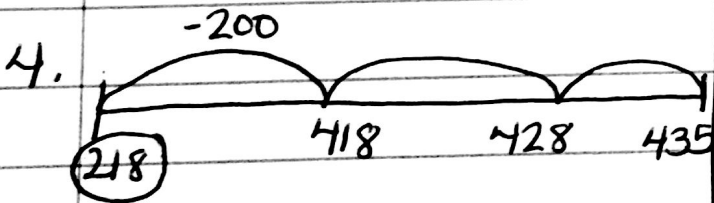
I'm finding the difference between 435 and 217.



I drew a number line and put 435 on the right end. Then I took the digit in the ones place away.  $435 - 7 = 428$



I then took the digits in the tens place from 428 and got 418.



Next, I took the digits in the hundreds place from 418 - 200 and got 218.

5.  $218$

The difference of 435 and 217 is 218.